



May 1993
Persons Who Had
Re-entered The Labour
Force
Australia

Catalogue No. 6264.0

At the bottom of the page, there are two horizontal bars: a top bar in green and a bottom bar in yellow, both with a slight diagonal cut on the right side, mirroring the design at the top.

EMBARGOED UNTIL 11.30 A.M. 25 NOVEMBER 1993

**PERSONS WHO HAD RE-ENTERED THE LABOUR FORCE
AUSTRALIA
MAY 1993**

**IAN CASTLES
Australian Statistician**

AUSTRALIAN BUREAU OF STATISTICS

CATALOGUE NO. 6264.0

© Commonwealth of Australia 1993

Printed in Australia by ALAN LAW, Commonwealth Government Printer, Canberra

CONTENTS

<i>Table</i>	<i>Page</i>
.. Summary of Findings	1
1. Persons aged 15 and over, May 1987, May 1990 and May 1993 — Summary of labour force activity and whether had re-entered the labour force and sex	4
2. Persons who were in the labour force in May 1993 but were not in the labour force twelve months ago — Selected characteristics, previous work history and sex	5
3. Persons who were in the labour force in May 1993 but were not in the labour force twelve months ago and had worked continuously for a period of twelve months or more at some earlier time — Selected characteristics of previous job and whether not in the labour force for a period of twelve months or more and sex	8
4. Persons who had re-entered the labour force — Job search experience, other related characteristics and whether working or looking for work	9
5. Occupation in previous job, main activity while not in the labour force since previous job, main reason for wanting to work again and time since previous job	10
6. Persons who had re-entered the labour force and were working — Age, industry, main reason for wanting to work again and full-time and part-time workers	11
7. Persons who had re-entered the labour force and were working as employees — Main reason for wanting to work again, method of job attainment, usual gross weekly pay, time since previous job and full-time and part-time workers	11
8. All populations — States and Territories of usual residence	12
.. Explanatory Notes	13
.. Technical Note	14
.. Glossary	16
.. Special data services — Data items and how to order special tables from this survey	18

INQUIRIES

- *for further information about statistics in this publication and the availability of related unpublished statistics, contact Mr Michael Jones on Canberra (06) 252 6503 or Labour Force Inquiries in your ABS State office (see page 23 for contact numbers).*
- *for information about other ABS statistics and services please refer to the last page of this publication.*

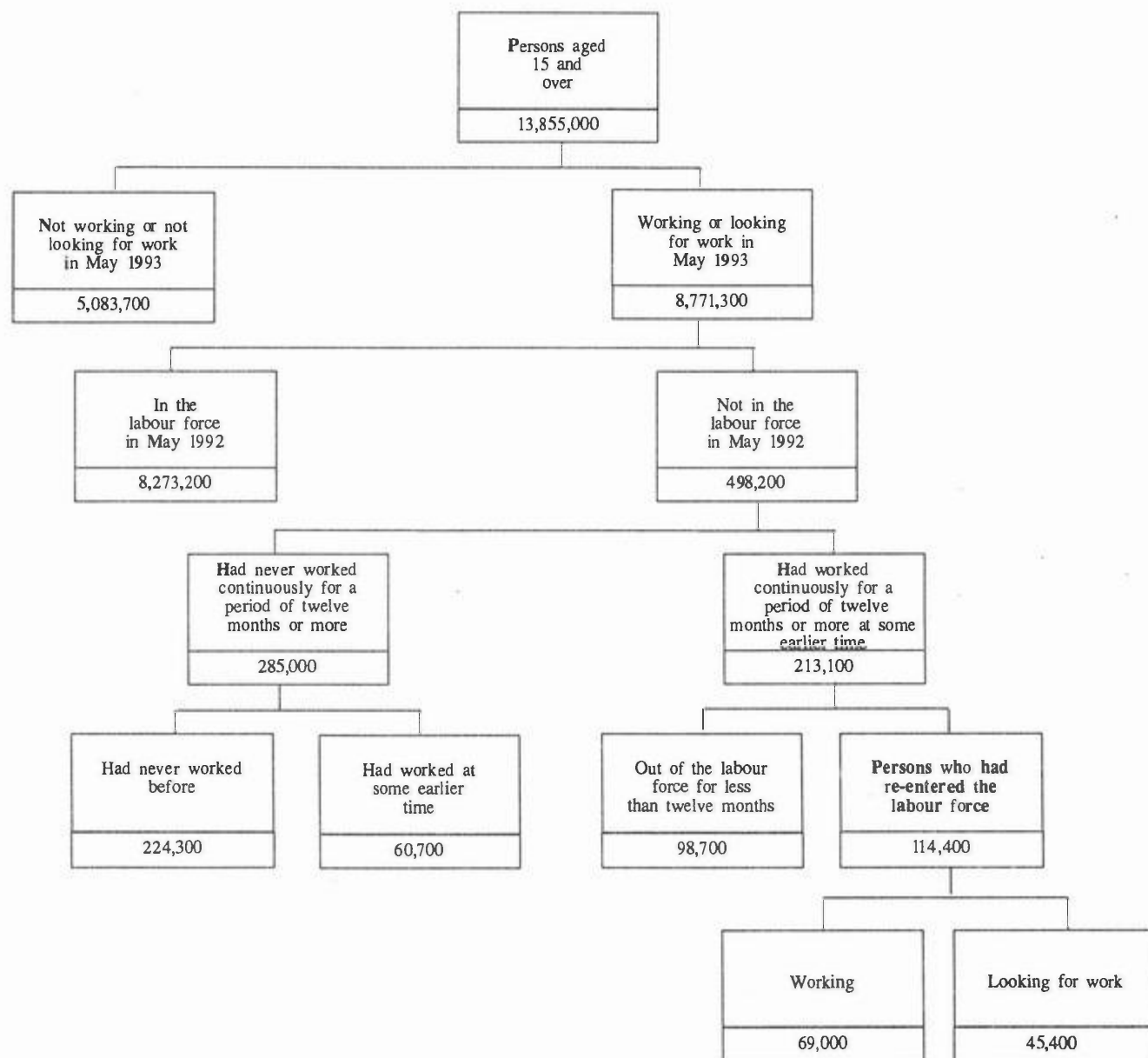
ADDITIONAL DATA ON REQUEST

The ABS offers a range of unpublished data from this survey upon request. An order form can be found on page 22.

SUMMARY OF FINDINGS

NOTE: In this publication, the term persons who had re-entered the labour force, refers to persons who were working or looking for work in May 1993, had a period not in the labour force of at least twelve months duration that finished within the last twelve months and had worked continuously for at least twelve months at some earlier time.

DIAGRAM 1. PERSONS AGED 15 AND OVER: SUMMARY OF LABOUR FORCE ACTIVITY AND WHETHER RE-ENTERED THE LABOUR FORCE, MAY 1993



Source: Table 1

Overview

In May 1993, the Australian civilian population aged 15 and over was 13.9 million persons. Of these persons, 8.8 million (63%) were working or looking for work in May 1993 with 8.3 million having also been in the labour force twelve months ago.

There were 498,200 persons who were working or looking for work in May 1993 but not in the labour force in May 1992. Some 57 per cent of these persons had never worked continuously for a period of twelve months or more. Persons aged 15 to 24 years made up 93 per cent of those who had never worked continuously for twelve months or more (including 45 per cent who had never worked before) (Table 2).

A further 213,100 persons were working or looking for work in May 1993 but not in the labour force in May 1992, and had worked continuously for a period of twelve months or more. Of these, 114,400 persons had also been out of the labour force for a period of twelve months or more at some earlier time. This group is defined as persons who had re-entered the labour force and represents 1.3 per cent of persons working or looking for work in May 1993.

In May 1990 (the last time this survey was held), the number of persons who had re-entered the labour force was 137,400, or 1.6 per cent of persons working or looking for work (Table 1, Diagram 1).

Persons who had re-entered the labour force

The number of persons who had re-entered the labour force and were working has declined from 104,300 in May 1990 to 69,000 in May 1993. Over the same period, there was an increase in the number of persons who had re-entered the labour force and were looking for work, from 33,000 in May 1990 to 45,400 in May 1993.

In May 1993, 80 per cent of all re-entrants were female, including 57,200 females (50% of all re-entrants) who were working, and 34,400 females (30% of all re-entrants) who were looking for work. In May 1990, the number of female re-entrants who were working was 89,800 (65% of all re-entrants) while 27,400 (20% of all re-entrants) were looking for work (Table 1).

For all re-entrants, financial reasons was the main reason for wanting to work again (62%), followed by boredom/needed another interest (11%).

Of the 79,100 persons who had looked for work, more than one third were registered with the Commonwealth Employment Service (CES). For those persons who were not registered with the CES, 78 per cent contacted prospective employers in an attempt to find work during the previous twelve months. In comparison, 92 per cent of those persons registered with the CES contacted prospective employers. Some 35,300 re-entrants to the labour force had gained employment and not looked for work (ie. employer approached them or they had prior knowledge of the job).

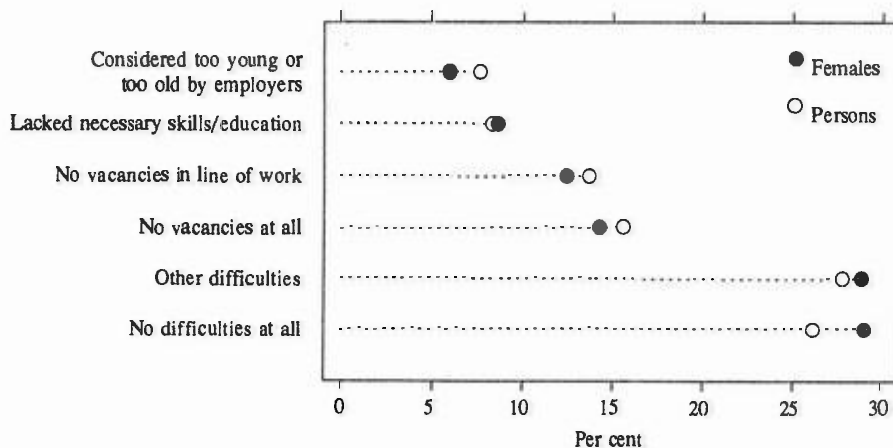
Of the 79,100 re-entrants who had looked for work during the last twelve months, 16 per cent reported their main difficulty in finding work was due to there being 'no vacancies at all', and 14 per cent reported that there were 'no vacancies in their line of work'. A further 26 per cent reported no difficulties in finding work. In contrast, in May 1990, 60 per cent of re-entrants who looked for work had no difficulties in finding work.

Almost a third (31%) of all re-entrants had not had a job for 1-2 years. Of these, 59 per cent were working at the time of the survey. For those whose time since previous job was 3-4 years, 63 per cent were working at the time of the survey, and for those persons whose time since previous job was greater than ten years, 57 per cent were working at the time of the survey (Table 4, Diagram 2).

The main activity for 85 per cent of female re-entrants while not in the labour force was home duties/childcare, while a further 9 per cent reported attending an educational institution. One third of male re-entrants reported attending an educational institution as their main activity while not in the labour force.

For those persons whose previous job was less than 20 years ago, 31 per cent had previously worked as Clerks, 22 per cent were Salespersons and personal service workers and a further 14 per cent worked as Labourers and related workers (Table 5, Diagram 3).

DIAGRAM 2. PERSONS WHO HAD RE-ENTERED THE LABOUR FORCE: PERSONS WHO HAD LOOKED FOR WORK AND MAIN DIFFICULTY IN FINDING WORK DURING THE LAST TWELVE MONTHS, MAY 1993



Source: Table 4

Persons who re-entered the labour force and were working

Of the 69,000 persons who had re-entered the labour force and were working —

- 73 per cent were working part-time in May 1993 compared with 68 per cent in May 1990;
- 58 per cent reported 'financial reasons' as the main reason for wanting to work again;
- 36 per cent were aged between 35 and 44 years, and 35 per cent were aged between 25 and 34 years; and
- 23 per cent worked in the Wholesale and retail trade industry, and 22 per cent worked in Community services (Table 6).

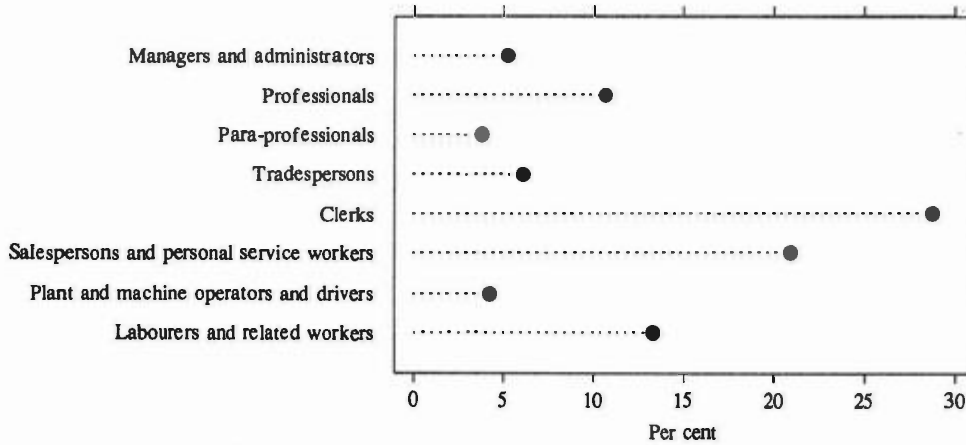
Persons who had re-entered the labour force and were working as employees

Of the estimated 50,700 persons in this category —

- 71 per cent were working part-time;
- 65 per cent reported that their main reason for wanting to work was due to financial reasons;
- one third earned a gross weekly pay of less than \$120 per week; and
- 30 per cent had not had a job for between 1 and 2 years and 27 per cent had not had a job for 3 to 4 years.

To gain their jobs, 27,900 (55%) re-entrant employees approached their employer for work, of whom 59 per cent reported that they had no prior knowledge that a job was available. Some 20,000 (39%) re-entrant employees were approached by an employer for work (Table 7).

DIAGRAM 3. PERSONS WHO HAD RE-ENTERED THE LABOUR FORCE AND OCCUPATION IN PREVIOUS JOB, MAY 1993



Source: Table 3

TABLE 1. PERSONS AGED 15 AND OVER: SUMMARY OF LABOUR FORCE ACTIVITY AND WHETHER HAD RE-ENTERED THE LABOUR FORCE, MAY 1987, MAY 1990 AND MAY 1993 ('000)

	May 1987	May 1990	May 1993
MALES			
Persons aged 15 and over	6,127.6	6,533.1	6,833.8
Not working or not looking for work	1,482.0	1,551.4	1,746.5
Working or looking for work	4,645.6	4,981.1	5,087.3
In the labour force twelve months ago	4,467.9	4,779.4	4,896.4
Not in the labour force twelve months ago	177.7	201.7	190.9
Had never worked continuously for a period of twelve months or more	137.2	151.5	137.0
Had never worked before	120.7	127.2	107.1
Had worked at some earlier time	16.5	24.3	29.8
Had worked continuously for a period of twelve months or more at some earlier time	40.5	50.2	53.9
Out of the labour force for less than twelve months	16.5	30.1	31.1
Working in May	14.8	25.3	23.1
Looking for work in May	*1.8	4.8	8.0
Persons who had re-entered the labour force	24.0	20.2	22.8
Working in May	17.0	14.6	11.8
Full-time	10.7	8.4	6.4
Part-time	6.3	6.1	5.5
Looking for work in May	7.0	5.6	11.0
FEMALES			
Persons aged 15 and over	6,313.3	6,703.4	7,021.2
Not working or not looking for work	3,160.4	3,130.3	3,337.2
Working or looking for work	3,152.9	3,573.1	3,684.1
In the labour force twelve months ago	2,832.2	3,228.0	3,376.8
Not in the labour force twelve months ago	320.7	345.1	307.3
Had never worked continuously for a period of twelve months or more	160.7	161.8	148.1
Had never worked before	134.2	132.4	117.1
Had worked at some earlier time	26.4	29.4	30.9
Had worked continuously for a period of twelve months or more at some earlier time	160.1	183.2	159.2
Out of the labour force for less than twelve months	29.3	66.1	67.6
Working in May	26.3	55.4	54.7
Looking for work in May	*3.0	10.7	12.9
Persons who had re-entered the labour force	130.8	117.2	91.6
Working in May	95.4	89.8	57.2
Full-time	25.5	24.6	12.3
Part-time	69.9	65.2	44.9
Looking for work in May	35.4	27.4	34.4
PERSONS			
Persons aged 15 and over	12,400.9	13,236.5	13,855.0
Not working or not looking for work	4,642.4	4,682.3	5,083.7
Working or looking for work	7,798.6	8,554.2	8,771.3
In the labour force twelve months ago	7,300.1	8,007.4	8,273.2
Not in the labour force twelve months ago	498.5	546.8	498.2
Had never worked continuously for a period of twelve months or more	297.9	313.3	285.0
Had never worked before	254.9	259.6	224.3
Had worked at some earlier time	42.9	53.8	60.7
Had worked continuously for a period of twelve months or more at some earlier time	200.6	233.5	213.1
Out of the labour force for less than twelve months	45.9	96.1	98.7
Working in May	41.1	80.7	77.8
Looking for work in May	4.8	15.5	20.9
Persons who had re-entered the labour force	154.8	137.4	114.4
Working in May	112.4	104.3	69.0
Full-time	36.2	33.0	18.7
Part-time	76.2	71.3	50.4
Looking for work in May	42.4	33.0	45.4

TABLE 2. PERSONS WHO WERE IN THE LABOUR FORCE IN MAY 1993 BUT WERE NOT IN THE LABOUR FORCE TWELVE MONTHS AGO : SELECTED CHARACTERISTICS AND PREVIOUS WORK HISTORY, MAY 1993
(*000)

	Had never worked continuously for a period of twelve months or more			Had worked continuously for a period of twelve months or more at some earlier time			Total	Total
	Had never worked before	Had worked at some earlier time	Total	Not in labour force for less than twelve months	Persons who had re-entered the labour force	Total		
MALES								
<i>Age—</i>								
15-24	104.9	27.9	132.8	6.8	*3.9	10.7	143.5	
25-34	* 1.4	* 1.6	* 3.0	9.5	5.4	14.9	18.0	
35-44	*0.6	* 0.3	* 0.9	7.8	6.5	14.3	15.2	
45-54	*0.0	* 0.0	* 0.0	* 2.8	* 2.4	5.2	5.2	
55 and over	*0.2	*0.0	*0.2	4.2	4.6	8.8	9.0	
<i>Family status—</i>								
Member of a family	96.7	23.1	119.8	22.1	17.1	39.2	158.9	
Husband or wife	* 1.9	* 1.8	* 3.7	16.8	13.2	30.0	33.7	
With dependants present	*0.7	* 0.8	* 1.5	8.4	7.3	15.7	17.2	
Without dependants present	* 1.2	* 1.0	* 2.2	8.4	5.9	14.3	16.5	
Sole parent	*0.0	* 0.0	*0.0	*0.2	*0.3	*0.6	*0.6	
Other family head	*0.2	* 0.0	*0.2	*0.0	*0.6	*0.6	*0.8	
Full-time student aged 15-24	44.9	8.4	53.3	* 1.0	*0.6	* 1.7	55.0	
Other child of married couple or family head	47.9	12.6	60.5	4.0	* 2.1	6.1	66.7	
Other relative of married couple or family head	* 1.8	* 0.2	* 2.0	* 0.0	*0.2	*0.2	* 2.2	
Not a member of a family	5.7	4.0	9.7	7.5	4.6	12.1	21.8	
Living alone	* 1.2	* 0.5	* 1.7	* 3.4	* 2.0	5.4	7.1	
Not living alone	4.5	* 3.5	8.0	4.1	* 2.6	6.7	14.7	
Family status not determined	4.8	* 2.7	7.4	* 1.5	* 1.1	* 2.7	10.1	
<i>Birthplace and period of arrival—</i>								
Born in Australia	92.6	24.7	117.4	21.9	14.8	36.7	154.1	
Born outside Australia	14.5	5.1	19.6	9.2	8.0	17.2	36.8	
Arrived before 1971	* 0.0	* 0.0	* 0.0	4.2	* 2.7	6.9	6.9	
Arrived 1971-1980	5.5	* 2.9	8.4	* 0.8	* 2.5	* 3.3	11.6	
Arrived 1981-1990	7.5	* 2.0	9.6	* 2.5	* 1.8	4.3	13.8	
Arrived 1991 to survey date	* 1.4	* 0.2	* 1.6	* 1.7	* 1.0	* 2.7	4.4	
Born in main English-speaking countries	5.1	* 2.2	7.3	* 3.7	* 3.4	7.1	14.4	
Born in other countries	9.4	* 2.8	12.2	5.5	4.7	10.2	22.4	
<i>Educational attainment at May 1993—</i>								
With post-school qualifications	6.5	6.2	12.7	18.3	11.0	29.3	42.0	
Higher degree	* 0.3	* 0.0	* 0.3	* 1.6	* 0.4	* 2.0	* 2.2	
Post-graduate diploma	* 0.0	* 0.4	* 0.4	* 1.1	* 0.3	* 1.5	* 1.8	
Bachelor degree	* 3.5	* 3.5	7.1	4.4	* 2.5	6.9	13.9	
Undergraduate diploma	* 0.0	* 0.0	* 0.0	* 0.9	* 1.3	* 2.2	* 2.2	
Associate diploma	* 1.2	* 1.3	* 2.5	* 2.6	* 2.6	5.2	7.7	
Skilled vocational qualifications	* 0.7	* 0.6	* 1.3	6.8	* 3.3	10.1	11.3	
Basic vocational qualifications	* 0.8	* 0.4	* 1.2	* 0.9	* 0.7	* 1.6	* 2.8	
Without post-school qualifications	62.6	18.0	80.7	11.1	11.1	22.2	102.9	
Completed highest level of secondary school available	35.3	12.4	47.7	5.9	4.1	10.0	57.7	
Attending a tertiary institution in May 1993	17.6	7.2	24.7	* 1.5	* 1.5	* 3.0	27.7	
Not attending a tertiary institution in May 1993	17.7	5.2	23.0	4.3	* 2.6	7.0	30.0	
Did not complete highest level of secondary school available(a)	27.3	5.6	33.0	5.2	7.0	12.2	45.2	
Attending a tertiary institution in May 1993	5.4	* 0.5	5.9	* 0.3	* 0.0	* 0.3	6.2	
Not attending a tertiary institution in May 1993	21.9	5.1	27.0	5.0	7.0	12.0	39.0	
Still at school	38.0	5.6	43.6	* 0.6	* 0.0	* 0.6	44.1	
Not asked(b)	* 0.0	* 0.0	* 0.0	* 1.2	* 0.7	* 1.8	* 1.8	
<i>Whether working or looking for work at May 1993—</i>								
Working	61.7	22.0	83.7	23.1	11.8	34.9	118.6	
Looking for work	45.5	7.8	53.3	8.0	11.0	19.0	72.3	
Total	107.1	29.8	136.9	31.1	22.8	53.9	190.9	

TABLE 2. PERSONS WHO WERE IN THE LABOUR FORCE IN MAY 1993 BUT WERE NOT IN THE LABOUR FORCE TWELVE MONTHS AGO ; SELECTED CHARACTERISTICS AND PREVIOUS WORK HISTORY, MAY 1993
(*000)—continued

	Had never worked continuously for a period of twelve months or more			Had worked continuously for a period of twelve months or more at some earlier time			Total
	Had never worked before	Had worked at some earlier time	Total	Not in labour force for less than twelve months	Persons who had re-entered the labour force	Total	
FEMALES							
<i>Age—</i>							
15-24	108.4	24.9	133.3	13.8	9.2	23.0	156.4
25-34	* 3.4	4.0	7.4	31.0	33.0	64.0	71.4
35-44	* 2.8	* 1.3	4.1	16.5	35.1	51.6	55.6
45-54	* 1.6	* 0.5	* 2.1	4.3	10.9	15.3	17.3
55 and over	* 0.9	* 0.3	* 1.2	* 1.9	* 3.4	5.3	6.5
<i>Family status—</i>							
Member of a family	101.9	22.8	124.7	55.9	82.4	138.3	263.0
Husband or wife	9.0	7.1	16.0	45.8	65.8	111.6	127.7
With dependants present	7.2	4.8	12.0	36.8	55.5	92.3	104.2
Without dependants present	* 1.8	* 2.3	4.1	9.1	10.3	19.4	23.4
Sole parent	* 3.1	* 1.9	5.0	5.0	12.8	17.8	22.8
Other family head	* 1.2	* 0.2	* 1.3	* 0.3	* 1.3	* 1.6	* 2.9
Full-time student aged 15-24	54.3	5.8	60.1	* 1.0	* 0.9	* 1.8	61.9
Other child of married couple or family head	33.0	7.2	40.2	* 3.1	* 1.7	4.8	45.0
Other relative of married couple or family head	* 1.3	* 0.7	* 2.0	* 0.7	* 0.0	* 0.7	* 2.7
Not a member of a family	10.6	6.2	16.8	7.2	4.5	11.7	28.5
Living alone	* 2.0	* 1.5	* 3.5	* 2.2	* 2.8	5.0	8.5
Not living alone	8.6	4.7	13.3	5.0	* 1.7	6.8	20.0
Family status not determined	4.7	* 1.9	6.6	4.5	4.7	9.1	15.8
<i>Birthplace and period of arrival—</i>							
Born in Australia	97.6	25.2	122.9	50.7	71.8	122.5	245.4
Born outside Australia	19.5	5.7	25.2	16.8	19.8	36.7	61.9
Arrived before 1971	* 0.7	* 0.3	* 1.0	5.1	10.3	15.3	16.3
Arrived 1971-1980	6.0	* 2.2	8.3	6.2	4.1	10.4	18.6
Arrived 1981-1990	10.6	* 2.6	13.2	* 3.5	* 3.9	7.5	20.7
Arrived 1991 to survey date	* 2.2	* 0.5	* 2.7	* 2.0	* 1.5	* 3.5	6.2
Born in main English-speaking countries	4.0	* 2.3	6.3	8.6	11.9	20.5	26.8
Born in other countries	15.5	* 3.4	18.9	8.3	7.9	16.2	35.1
<i>Educational attainment at May 1993 —</i>							
With post-school qualifications	14.8	10.0	24.7	34.9	33.2	68.0	92.8
Higher degree	* 0.3	* 0.0	* 0.3	* 0.3	* 0.6	* 1.0	* 1.3
Post-graduate diploma	* 0.8	* 1.0	* 1.8	* 3.5	* 1.3	4.8	6.6
Bachelor degree	4.1	5.2	9.3	10.2	6.1	16.2	25.5
Undergraduate diploma	* 0.3	* 1.4	* 1.6	5.2	4.1	9.3	11.0
Associate diploma	* 2.3	* 1.4	* 3.7	* 3.6	6.1	9.6	13.4
Skilled vocational qualifications	* 2.8	* 0.3	* 3.1	5.4	6.7	12.1	15.2
Basic vocational qualifications	4.2	* 0.8	4.9	6.6	8.3	14.9	19.9
Without post-school qualifications	57.2	18.9	76.1	32.1	58.1	90.2	166.3
Completed highest level of secondary school available	35.2	11.2	46.4	11.0	16.8	27.8	74.2
Attending a tertiary institution in May 1993	16.0	6.8	22.8	* 3.3	* 1.8	5.1	27.9
Not attending a tertiary institution in May 1993	19.2	4.4	23.6	7.7	15.0	22.7	46.2
Did not complete highest level of secondary school available(a)	22.0	7.8	29.7	21.1	41.3	62.4	92.2
Attending a tertiary institution in May 1993	* 3.2	* 0.8	4.1	* 0.2	* 0.7	* 0.9	4.9
Not attending a tertiary institution in May 1993	18.5	6.9	25.4	21.0	40.6	61.6	86.9
Still at school	45.0	* 2.0	47.0	* 0.2	* 0.3	* 0.5	47.5
Not asked(b)	* 0.2	* 0.0	* 0.2	* 0.4	* 0.1	* 0.5	* 0.6
<i>Whether working or looking for work at May 1993—</i>							
Working	59.4	22.3	81.7	54.7	57.2	111.9	193.6
Looking for work	57.8	8.6	66.4	12.9	34.4	47.3	113.7
<i>Total</i>	<i>117.1</i>	<i>30.9</i>	<i>148.1</i>	<i>67.6</i>	<i>91.6</i>	<i>159.2</i>	<i>307.3</i>

TABLE 2. PERSONS WHO WERE IN THE LABOUR FORCE IN MAY 1993 BUT WERE NOT IN THE LABOUR FORCE TWELVE MONTHS AGO: SELECTED CHARACTERISTICS AND PREVIOUS WORK HISTORY, MAY 1993 ('000)—continued

	Had never worked continuously for a period of twelve months or more			Had worked continuously for a period of twelve months or more at some earlier time			Total
	Had never worked before	Had worked at some earlier time	Total	Not in labour force for less than twelve months	Persons who had re-entered the labour force	Total	
PERSONS							
<i>Age—</i>							
15-24	213.3	52.8	266.1	20.6	13.1	33.7	299.9
25-34	4.9	5.5	10.4	40.5	38.4	79.0	89.3
35-44	* 3.4	* 1.7	5.0	24.3	41.6	65.9	70.9
45-54	* 1.6	* 0.5	* 2.1	7.1	13.3	20.5	22.5
55 and over	* 1.1	* 0.3	* 1.4	6.2	8.0	14.1	15.5
<i>Family status—</i>							
Member of a family	198.5	45.9	244.5	78.0	99.5	177.5	421.9
Husband or wife	10.9	8.9	19.8	62.7	78.9	141.6	161.4
With dependants present	7.9	5.6	13.5	45.2	62.8	108.0	121.5
Without dependants present	* 3.0	* 3.2	6.3	17.5	16.2	33.7	39.9
Sole parent	* 3.1	* 1.9	5.0	5.3	13.1	18.4	23.4
Other family head	* 1.3	* 0.2	* 1.5	* 0.3	* 1.9	* 2.2	* 3.7
Full-time student aged 15-24	99.2	14.2	113.4	* 2.0	* 1.5	* 3.5	116.9
Other child of married couple or family head	80.9	19.8	100.8	7.0	* 3.9	10.9	111.7
Other relative of married couple or family head	* 3.1	* 0.9	4.0	* 0.7	* 0.2	* 0.9	4.9
Not a member of a family	16.3	10.2	26.5	14.7	9.1	23.8	50.3
Living alone	* 3.2	* 2.0	5.2	5.5	4.8	10.4	15.6
Not living alone	13.1	8.2	21.3	9.2	4.3	13.5	34.8
Family status not determined	9.5	4.6	14.1	6.0	5.8	11.8	25.9
<i>Birthplace and period of arrival—</i>							
Born in Australia	190.3	50.0	240.2	72.6	86.6	159.2	399.5
Born outside Australia	34.0	10.8	44.8	26.1	27.8	53.9	98.7
Arrived before 1971	* 0.7	* 0.3	* 1.0	9.3	13.0	22.3	23.2
Arrived 1971-1980	11.5	5.1	16.6	7.0	6.6	13.6	30.3
Arrived 1981-1990	18.1	4.6	22.8	6.1	5.7	11.8	34.5
Arrived 1991 to survey date	* 3.7	* 0.7	4.4	* 3.7	* 2.5	6.2	10.6
Born in main English-speaking countries	9.1	4.5	13.7	12.2	15.3	27.6	41.2
Born in other countries	24.9	6.2	31.1	13.8	12.5	26.3	57.5
<i>Educational attainment at May 1993 —</i>							
With post-school qualifications	21.3	16.2	37.5	53.1	44.2	97.3	134.8
Higher degree	* 0.6	* 0.0	* 0.6	* 1.9	* 1.0	* 3.0	* 3.5
Post-graduate diploma	* 0.8	* 1.4	* 2.1	4.6	* 1.6	6.3	8.4
Bachelor degree	7.7	8.7	16.4	14.6	8.5	23.1	39.4
Undergraduate diploma	* 0.3	* 1.4	* 1.6	6.1	5.4	11.5	13.1
Associate diploma	* 3.6	* 2.7	6.2	6.1	8.6	14.8	21.0
Skilled vocational qualifications	* 3.5	* 0.9	4.4	12.2	10.0	22.2	26.5
Basic vocational qualifications	5.0	* 1.2	6.2	7.5	9.0	16.5	22.7
Without post-school qualifications	119.8	37.0	156.8	43.2	69.2	112.5	269.2
Completed highest level of secondary school available	70.5	23.6	94.1	16.8	20.9	37.8	131.9
Attending a tertiary institution in May 1993	33.6	13.9	47.5	4.8	* 3.3	8.1	55.7
Not attending a tertiary institution in May 1993	36.9	9.7	46.5	12.0	17.6	29.6	76.2
Did not complete highest level of secondary school available(a)	49.3	13.4	62.7	26.4	48.3	74.7	137.4
Attending a tertiary institution in May 1993	8.7	* 1.3	10.0	* 0.4	* 0.7	* 1.2	11.2
Not attending a tertiary institution in May 1993	40.4	12.0	52.4	25.9	47.6	73.5	125.9
Still at school	83.0	7.6	90.6	* 0.8	* 0.3	* 1.1	91.7
Not asked(b)	* 0.2	* 0.0	* 0.2	* 1.5	* 0.8	* 2.3	* 2.5
<i>Whether working or looking for work at May 1993—</i>							
Working	121.1	44.3	165.4	77.8	69.0	146.8	312.2
Looking for work	103.2	16.4	119.6	20.9	45.4	66.3	185.9
Total	224.3	60.7	285.0	98.7	114.4	213.1	498.2

(a) Includes persons who never attended school. (b) Persons aged 65 years and over were not asked their educational qualifications.

TABLE 3. PERSONS WHO WERE IN THE LABOUR FORCE IN MAY 1993 BUT WERE NOT IN THE LABOUR FORCE TWELVE MONTHS AGO AND HAD WORKED CONTINUOUSLY FOR A PERIOD OF TWELVE MONTHS OR MORE AT SOME EARLIER TIME; SELECTED CHARACTERISTICS OF PREVIOUS JOB AND WHETHER NOT IN THE LABOUR FORCE FOR A PERIOD OF TWELVE MONTHS OR MORE, MAY 1993 ('000)

	<i>Whether not in labour force for a period of twelve months or more</i>						
	<i>Not in labour force for less than twelve months</i>	<i>Persons who had re-entered the labour force</i>					
		<i>Males</i>	<i>Females</i>	<i>Persons</i>	<i>Males</i>	<i>Females</i>	<i>Persons</i>
<i>Time since previous job—</i>							
1-2 years	76.8	8.6	26.5	35.1	35.0	76.9	111.9
3-9 years	18.8	12.0	41.5	53.5	16.2	56.1	72.3
3-4 years	9.4	7.9	19.5	27.4	10.8	26.0	36.8
5-9 years	9.4	4.1	22.0	26.1	5.4	30.1	35.5
10 years or more	* 3.1	* 2.2	23.7	25.8	* 2.7	26.2	29.0
10-19 years	* 2.5	* 2.0	16.6	18.5	* 2.5	18.5	21.0
20 years or more	* 0.6	* 0.2	7.1	7.3	* 0.2	7.7	8.0
<i>Full-time or part-time worker in previous job—</i>							
Previous job less than 20 years ago	98.0	22.6	84.5	107.1	53.7	151.5	205.2
Full-time	69.9	21.0	64.3	85.4	47.6	107.6	155.2
Part-time	25.9	* 1.4	19.8	21.2	5.7	41.3	47.1
Varied/did not know	* 2.3	* 0.2	* 0.4	* 0.6	* 0.4	* 2.5	* 2.9
Previous job 20 or more years ago	* 0.6	* 0.2	7.1	7.3	* 0.2	7.7	8.0
<i>Occupation in previous job—</i>							
Previous job less than 20 years ago	98.0	22.6	84.5	107.1	53.7	151.5	205.2
Managers and administrators	5.0	* 2.7	* 3.4	6.1	6.5	4.6	11.1
Professionals	17.7	* 3.0	9.3	12.3	8.2	21.8	30.0
Para-professionals	7.2	* 0.9	* 3.6	4.5	* 1.4	10.3	11.7
Tradespersons	9.3	4.5	* 2.5	7.1	12.0	4.4	16.4
Clerks	21.0	* 1.8	31.0	32.9	5.4	48.5	53.9
Salespersons and personal service workers	22.6	* 0.6	23.4	24.0	4.2	42.4	46.6
Plant and machine operators, and drivers	* 3.3	* 2.9	* 2.0	4.9	4.7	* 3.4	8.1
Labourers and related workers	12.1	6.0	9.2	15.3	11.4	16.0	27.4
Previous job 20 or more years ago	* 0.6	* 0.2	7.1	7.3	* 0.2	7.7	8.0
<i>Status of worker in previous job—</i>							
Previous job less than 20 years ago	98.0	22.6	84.5	107.1	53.7	151.5	205.2
Employers	* 3.2	* 0.6	* 1.4	* 2.1	* 2.3	* 3.0	5.3
Self-employed	5.2	* 0.8	* 3.5	4.3	4.4	5.1	9.5
Wage and salary earners	89.1	21.1	79.0	100.2	46.7	142.6	189.2
Unpaid family helpers	* 0.6	* 0.0	* 0.5	* 0.5	* 0.3	* 0.8	* 1.1
Previous job more than 20 years ago	* 0.6	* 0.2	7.1	7.3	* 0.2	7.7	8.0
<i>Reason for ceasing previous job—</i>							
Job loser	21.7	10.9	14.6	25.4	22.6	24.5	47.2
Retrenched	10.7	4.4	7.8	12.2	11.0	11.9	22.9
Job was temporary or seasonal and did not leave to return to studies	* 2.0	* 0.0	* 0.1	* 0.1	* 0.6	* 1.6	* 2.2
Own ill health or injury	7.5	5.8	5.5	11.2	9.6	9.1	18.7
Business closed down for economic reasons	* 1.5	* 0.7	* 1.2	* 1.9	* 1.4	* 1.9	* 3.3
Job leaver	77.0	12.0	77.0	89.0	31.3	134.7	166.0
Unsatisfactory work arrangements	* 3.7	* 2.5	* 2.8	5.3	* 3.6	5.4	9.0
Job was temporary or seasonal and left to return to studies	* 0.4	* 0.0	* 0.0	* 0.0	* 0.4	* 0.0	* 0.4
Business closed down for other reasons	* 1.6	* 0.7	* 1.1	* 1.8	* 1.6	* 1.8	* 3.3
Retired/did not want to work any longer	4.6	* 2.2	* 3.6	5.8	* 3.7	6.8	10.5
Returned to studies	9.2	* 3.5	5.1	8.7	8.2	9.7	17.8
To get married	* 1.4	* 0.0	4.9	4.9	* 0.0	6.3	6.3
Pregnancy/to have children	26.8	..	38.6	38.6	..	65.5	65.5
To look after family, house or someone else	* 2.3	* 1.1	* 3.5	4.6	* 2.0	4.9	6.8
To have holiday/to move house/spouse transferred	21.1	* 1.3	13.4	14.7	8.8	27.0	35.8
Other	6.0	* 0.6	4.0	4.6	* 3.1	7.5	10.5
<i>Whether working or looking for work at May 1993—</i>							
Working	77.8	11.8	57.2	69.0	34.9	111.9	146.8
Looking for work	20.9	11.0	34.4	45.4	19.0	47.3	66.3
Total	98.7	22.8	91.6	114.4	53.9	159.2	213.1

TABLE 4. PERSONS WHO HAD RE-ENTERED THE LABOUR FORCE : JOB SEARCH EXPERIENCE AND OTHER RELATED CHARACTERISTICS AND WHETHER WORKING OR LOOKING FOR WORK, AUSTRALIA, MAY 1993
(*000)

	Total Males	Females		Total	Persons		Total
		Working	Looking for work		Working	Looking for work	
<i>Main reason for wanting to work again—</i>							
Completed studies	* 3.3	* 2.1	* 0.9	* 3.0	4.1	* 2.2	6.3
Financial reasons	13.0	34.6	22.9	57.4	40.1	30.3	70.4
Returned after own illness or injury	* 2.8	* 0.7	* 0.2	* 0.9	* 1.8	* 2.0	* 3.8
Children gone to school/no longer needed to look after children	* 0.2	* 2.6	* 3.5	6.1	* 2.8	* 3.5	6.3
Boredom/needed another interest	* 1.6	6.1	5.2	11.3	7.3	5.7	12.9
To help in family business/bought business	* 0.5	8.2	* 0.0	8.2	8.7	* 0.0	8.7
Other	* 1.4	* 3.0	* 1.7	4.7	4.3	* 1.8	6.1
<i>Time spent not in the labour force since previous job—</i>							
1-2 years	12.9	22.0	14.1	36.1	27.9	21.1	49.0
3-9 years	7.5	24.8	11.8	36.6	28.9	15.2	44.2
3-4 years	5.1	12.0	5.3	17.3	14.7	7.7	22.4
5-9 years	* 2.4	12.8	6.5	19.3	14.2	7.6	21.8
10 years or more	* 2.4	10.4	8.5	18.9	12.2	9.1	21.3
10-19 years	* 2.0	6.1	6.6	12.7	7.5	7.2	14.7
20 years or more	* 0.3	4.3	* 1.9	6.2	4.7	* 1.9	6.6
<i>Time since previous job—</i>							
1-2 years	8.6	16.7	9.8	26.5	20.7	14.4	35.1
3-9 years	12.0	27.6	13.9	41.5	33.6	19.9	53.5
3-4 years	7.9	12.9	6.6	19.5	17.3	10.1	27.4
5-9 years	4.1	14.7	7.3	22.0	16.3	9.8	26.1
10 years or more	* 2.2	12.9	10.8	23.7	14.8	11.1	25.8
10-19 years	* 2.0	8.5	8.1	16.6	10.1	8.4	18.5
20 years or more	* 0.2	4.4	* 2.7	7.1	4.6	* 2.7	7.3
<i>Active steps taken to find work during the last twelve months —</i>							
Had looked for work	17.8	26.8	34.4	61.3	33.7	45.4	79.1
Registered with CES	11.8	6.0	12.0	18.0	10.2	19.7	29.9
Took no other active steps	* 0.2	* 0.5	* 0.0	* 0.5	* 0.8	* 0.0	* 0.8
Contacted prospective employers	11.6	5.2	10.7	15.9	9.2	18.3	27.5
Took other active steps	* 0.0	* 0.2	* 1.4	* 1.6	* 0.2	* 1.4	* 1.6
Not registered with CES	6.0	20.9	22.4	43.3	23.5	25.7	49.2
Took only inactive steps	* 0.3	* 1.1	* 2.9	4.0	* 1.3	* 3.0	4.3
Contacted prospective employers	* 3.9	16.7	17.6	34.3	18.2	20.0	38.2
Took other active steps	* 1.8	* 3.1	* 1.9	5.0	4.0	* 2.7	6.8
Had not looked for work	5.0	30.3	..	30.3	35.3	..	35.3
<i>Main difficulty in finding work during the last twelve months —</i>							
Had looked for work	17.8	26.8	34.4	61.3	33.7	45.4	79.1
Considered too young or too old by employers	* 2.4	* 1.3	* 2.4	* 3.7	* 1.9	4.2	6.1
Lacked necessary skills/education	* 1.3	* 1.1	4.3	5.4	* 1.3	5.4	6.7
No vacancies in line of work	* 3.3	* 2.8	4.9	7.7	4.0	7.0	11.0
No vacancies at all	* 3.6	* 2.2	6.7	8.8	* 2.7	9.7	12.4
Other difficulties(a)	4.4	6.5	11.2	17.8	8.7	13.5	22.1
No difficulties at all	* 2.9	12.9	4.9	17.9	15.2	5.6	20.8
Had not looked for work	5.0	30.3	..	30.3	35.3	..	35.3
Total	22.8	57.2	34.4	91.6	69.0	45.4	114.4

(a) Includes 'own ill health or disability', 'unsuitable hours', 'transport problems', 'language difficulties', 'insufficient work experience', 'difficulties with ethnic background', 'difficulties finding childcare', 'other family responsibilities' and 'any other difficulties'.

TABLE 5. PERSONS WHO HAD RE-ENTERED THE LABOUR FORCE: OCCUPATION IN PREVIOUS JOB, MAIN ACTIVITY WHILE NOT IN THE LABOUR SINCE PREVIOUS JOB, MAIN REASON FOR WANTING TO WORK AGAIN AND TIME SINCE PREVIOUS JOB, MAY 1993
(*000)

	Time since previous job (years)					10 or more	Total
	1-2	3-9		Total			
		3-4	5-9				
FEMALES							
<i>Occupation in previous job—</i>							
Previous job less than 20 years ago(a)	26.5	19.5	22.0	41.5	16.6	84.5	
Professionals	* 3.3	* 2.2	* 2.5	4.8	* 1.2	9.3	
Clerks	8.7	5.8	9.3	15.1	7.2	31.0	
Salespersons and personal service workers	8.1	5.5	5.1	10.6	4.7	23.4	
Labourers and related workers	* 2.2	* 3.4	* 1.8	5.1	* 1.9	9.2	
Previous job 20 or more years ago	7.1	7.1	
<i>Main activity while not in the labour force since previous job—</i>							
Attending an educational institution	4.9	* 2.3	* 1.3	* 3.6	* 0.0	8.5	
Home duties/childcare	18.1	16.3	20.4	36.7	23.4	78.2	
Own illness/injury; own disability/handicap	* 1.1	* 0.3	* 0.1	* 0.4	* 0.0	* 1.5	
Other(b)	* 2.3	* 0.7	* 0.1	* 0.8	* 0.3	* 3.4	
<i>Main reason for wanting to work again —</i>							
Financial reasons	17.6	13.7	12.5	26.2	13.6	57.4	
Children gone to school/no longer needed to look after children	* 0.6	* 1.0	* 2.3	* 3.3	* 2.2	6.1	
Boredom/needed another interest	* 3.6	* 1.9	* 2.9	4.7	* 2.9	11.3	
Other(c)	4.6	* 3.0	4.3	7.3	4.9	16.8	
Total	26.5	19.5	22.0	41.5	23.7	91.6	
PERSONS							
<i>Occupation in previous job—</i>							
Previous job less than 20 years ago(a)	35.1	27.4	26.1	53.5	18.5	107.1	
Professionals	4.2	* 2.9	* 3.1	6.1	* 2.1	12.3	
Clerks	9.0	6.8	9.9	16.7	7.2	32.9	
Salespersons and personal service workers	8.3	5.7	5.1	10.8	4.9	24.0	
Labourers and related workers	4.6	6.1	* 2.7	8.8	* 2.0	15.3	
Previous job 20 or more years ago	7.3	7.3	
<i>Main activity while not in the labour force since previous job—</i>							
Attending an educational institution	7.3	5.9	* 2.9	8.8	* 0.0	16.1	
Home duties/childcare	18.7	16.4	20.9	37.3	24.0	80.0	
Own illness/injury; own disability/handicap	* 3.8	* 2.6	* 1.1	* 3.7	* 0.2	7.7	
Other(b)	5.2	* 2.5	* 1.2	* 3.7	* 1.6	10.6	
<i>Main reason for wanting to work again —</i>							
Financial reasons	23.8	17.7	14.6	32.2	14.3	70.4	
Children gone to school/no longer needed to look after children	* 0.6	* 1.0	* 2.5	* 3.5	* 2.2	6.3	
Boredom/needed another interest	4.0	* 2.2	* 3.5	5.7	* 3.3	12.9	
Other(c)	6.6	6.5	5.6	12.1	6.0	24.8	
Total	35.1	27.4	26.1	53.5	25.8	114.4	

(a) Includes 'Managers and administrators', 'Para-professionals', 'Tradespersons' and 'Plant and machine operators and drivers'. (b) Includes 'travel/moving house/holiday', 'to help in family business/bought business' and 'retired/voluntarily inactive'. (c) Includes 'returned after own illness or injury', 'to help in family business/bought business' and 'completed studies'.

TABLE 6. PERSONS WHO HAD RE-ENTERED THE LABOUR FORCE AND WERE WORKING : AGE, INDUSTRY, MAIN REASON FOR WANTING TO WORK AGAIN AND FULL-TIME AND PART-TIME WORKERS, MAY 1993 ('000)

	<i>Full-time workers</i>		<i>Part-time workers</i>		<i>Total</i>	
	<i>Females</i>	<i>Persons</i>	<i>Females</i>	<i>Persons</i>	<i>Females</i>	<i>Persons</i>
<i>Age—</i>						
15-24	* 2.5	* 3.2	* 2.5	* 3.7	5.1	6.9
25-34	4.1	6.0	16.4	17.8	20.5	23.9
35-44	* 3.8	5.7	18.8	19.3	22.7	24.9
45-54	* 1.4	* 2.9	5.0	5.9	6.5	8.8
55 and over	* 0.4	* 0.9	* 2.1	* 3.7	* 2.5	4.6
<i>Industry at May 1993 —</i>						
Manufacturing	* 1.3	* 2.2	* 3.2	4.6	4.5	6.8
Wholesale and retail trade	* 2.8	5.0	9.8	10.6	12.6	15.7
Finance, property and business services	* 1.4	* 1.6	6.2	6.7	7.6	8.3
Community services	* 3.5	* 3.9	10.8	11.0	14.3	14.9
Recreation, personal and other services	* 0.8	* 1.2	8.5	9.7	9.3	10.9
Other(a)	* 2.4	4.7	6.4	7.7	8.8	12.4
<i>Main reason for wanting to work again—</i>						
Completed studies	* 1.7	* 2.7	* 0.3	* 1.3	* 2.1	4.1
Financial reasons	7.0	10.2	27.6	29.9	34.6	40.1
Boredom/needed another interest	* 0.7	* 1.5	5.3	5.8	6.1	7.3
Other(b)	* 2.8	4.3	11.7	13.3	14.5	17.6
Total	12.3	18.7	44.9	50.4	57.2	69.0

(a) Includes 'Agriculture, forestry, fishing and hunting', 'Mining', 'Electricity, gas and water', 'Transport and storage', 'Communication' and 'Public administration and defence'. (b) Includes 'returned after own illness or injury', 'children gone to school/no longer needed to look after children', 'to help in family business/bought business' and 'unpaid leave finished'.

TABLE 7. PERSONS WHO HAD RE-ENTERED THE LABOUR FORCE AND WERE WORKING AS EMPLOYEES: MAIN REASON FOR WANTING TO WORK AGAIN, METHOD OF JOB ATTAINMENT, USUAL GROSS WEEKLY PAY, TIME SINCE PREVIOUS JOB AND FULL-TIME AND PART-TIME WORKERS, MAY 1993 ('000)

	<i>Full-time workers</i>		<i>Part-time workers</i>		<i>Total</i>	
	<i>Females</i>	<i>Persons</i>	<i>Females</i>	<i>Persons</i>	<i>Females</i>	<i>Persons</i>
<i>Main reason for wanting to work again —</i>						
Completed studies	* 1.7	* 2.7	* 0.3	* 1.1	* 2.1	* 3.8
Financial reasons	6.3	9.1	22.0	23.9	28.2	33.0
Boredom/needed another interest	* 0.4	* 0.9	4.3	4.8	4.7	5.7
Other(a)	* 1.3	* 2.1	5.4	6.0	6.7	8.1
<i>Method of job attainment—</i>						
Jobseeker approached employer	6.5	9.8	16.5	18.1	23.1	27.9
Had no prior knowledge that job was available	4.0	6.4	9.9	10.2	13.9	16.6
First step taken —						
Contacted likely employers	* 2.0	* 3.2	5.5	5.8	7.6	9.1
Other(b)	* 2.0	* 3.1	4.3	4.4	6.3	7.6
Had prior knowledge that job was available	* 2.5	* 3.4	6.7	7.8	9.2	11.3
Through vocational guidance/work experience programs	* 1.3	* 2.1	* 2.5	* 2.9	* 3.8	5.0
Other(c)	* 1.2	* 1.4	4.1	4.9	5.3	6.3
Employer approached jobseeker	* 2.8	4.0	13.9	16.0	16.8	20.0
Not asked	* 0.3	* 1.1	* 1.5	* 1.7	* 1.8	* 2.8
<i>Usual gross weekly pay at May 1993 (\$)—</i>						
Under 120	* 0.6	* 1.1	13.6	15.8	14.2	16.8
120 and under 200	* 0.1	* 0.1	7.6	8.0	7.8	8.2
200 and under 400	* 2.8	* 3.8	8.4	9.3	11.2	13.1
400 and over	5.6	8.9	* 0.7	* 0.9	6.4	9.9
Did not know(d)	* 0.6	* 0.9	* 1.6	* 1.8	* 2.2	* 2.7
<i>Time since previous job —</i>						
1-2 years	4.3	6.5	7.8	8.8	12.1	15.3
3-9 years	* 3.5	5.9	16.7	19.1	20.2	25.0
3-4 years	* 1.8	* 3.5	8.3	10.2	10.1	13.7
5-9 years	* 1.7	* 2.3	8.3	8.9	10.1	11.2
10 years or more	* 1.8	* 2.5	7.5	7.8	9.4	10.4
Total	9.7	14.9	32.0	35.8	41.7	50.7

(a) Includes 'returned after own illness or injury', 'children gone to school/no longer needed to look after children', 'to help in family business/bought business' and 'unpaid leave finished'. (b) Includes 'tendered/advertised for work', 'contacted friends or relatives' and 'checked CES noticeboards'. (c) Includes 'CES', 'private employment agency', 'newspaper advertisements', 'friends/relatives/company contacts', 'sign/notice on employer's premises', 'welfare agency or organisation' and 'employer asked jobseeker'. (d) Includes 'payment in kind' and 'income not obtained'.

**TABLE 8. POPULATIONS BY STATES AND TERRITORIES OF USUAL RESIDENCE
(^{'000})**

	<i>New South Wales</i>	<i>Victoria</i>	<i>Queensland</i>	<i>South Australia</i>	<i>Western Australia</i>	<i>Tasmania</i>	<i>Northern Territory</i>	<i>Australian Capital Territory</i>	<i>Australia</i>
<i>Population 1 :</i> Persons aged 15 and over	4,699.4	3,534.3	2,413.0	1,172.9	1,327.9	361.7	114.8	231.0	13,855.0
<i>Population 2 :</i> Persons who were in the labour force at May 1993 but were not in the labour force twelve months ago	148.1	122.1	99.3	42.3	55.3	12.6	6.1	12.4	498.2
<i>Population 3 :</i> Persons who were in the labour force at May 1993 but were not in the labour force twelve months ago and had worked continuously for at least twelve months at some earlier time	58.9	51.4	44.7	17.9	25.7	5.4	2.9	6.2	213.1
<i>Population 4 :</i> Persons who had re-entered the labour force	30.7	27.5	25.7	8.5	15.5	3.3	* 0.6	2.7	114.4
<i>Population 5 :</i> Persons who had re-entered the labour force and were working	19.3	12.4	17.8	4.4	11.0	2.0	* 0.3	1.9	69.0
<i>Population 6 :</i> Persons who had re-entered the labour force and were looking for work	11.4	15.1	8.0	4.1	4.4	1.3	* 0.3	* 0.7	45.4
<i>Population 7 :</i> Persons who had re-entered the labour force and were working as employees	14.4	9.2	12.4	3.1	8.4	1.5	* 0.1	1.6	50.7

EXPLANATORY NOTES

Introduction

The monthly population survey (which is described in *The Labour Force, Australia* (6203.0)) comprises the monthly labour force survey and supplementary topics. This publication contains some results of a supplementary survey run in association with the May 1993 labour force survey conducted throughout Australia.

2. Of the respondents to the labour force survey, those who fell within the scope of the supplementary survey were asked additional questions. They were details of previous job, highest educational qualification gained since previous job, main activity while out of the labour force since previous job, main reason for wanting to work again and details of current job, if appropriate.

Scope

3. The scope of this supplementary survey was the same as that used for the labour force survey (described in full in *The Labour Force, Australia* (6203.0)) except that it was restricted to persons who had entered or re-entered the labour force in the last twelve months.

Coverage

4. In the population survey, coverage rules are applied which aim to ensure that each person is associated with only one dwelling, and hence has only one chance of selection. See *The Labour Force, Australia* (6203.0) for more details.

Definitions

5. Further definitions of labour force and demographic classifications appearing in this publication are given in *The Labour Force, Australia* (6203.0).

6. Unless otherwise stated, all characteristics referenced in this publication relate to the week before the interview (i.e. the reference week).

Results of the survey

7. Due to differences in the method of estimation used in this supplementary survey and that used in the labour force survey, there are some small variations between estimates in this publication and those in the corresponding issue of *The Labour Force, Australia* (6203.0).

8. Results of similar surveys, the first conducted in May 1985, have been given in previous issues of this publication. It is proposed that this survey will be conducted next in July 1995.

Comparability of series

9. It is impracticable to obtain information relating to a long period of time which is strictly comparable with that obtained in the monthly labour force survey for which the reference period is one week. The definitions used in determining the labour force status of persons in the monthly survey depend on a detailed set of questions asked about a person's labour force activity during the reference period. For the survey of persons who had re-entered the labour force a person is assigned to labour force categories at various points in time on the basis of a more limited set of questions. It is for this reason that the

terms *worked* and *looked for work* are used in this survey rather than the rigidly defined terms *employed* and *unemployed* used in the monthly labour force survey.

Discontinuities in the series

10. The educational attainment data item in this survey has been classified according to the Australian Bureau of Statistics Classification of Qualifications (ABSCQ). The major difference between data collected according to the ABSCQ and the previous classification used is that level of attainment and field of study in the ABSCQ are two distinct elements. Persons who received a qualification from a course of study of less than one semester full-time duration are excluded from the new classification. For a more detailed explanation of the ABSCQ, see Information Paper, *Australian Bureau of Statistics Classification of Qualifications — ABSCQ* (1263.0).

Reliability of the estimates

11. Estimates in this publication are subject to sampling and non-sampling errors. For further information refer to the Technical Note, page 14.

Related publications

12. Other ABS publications which may be of interest include:

The Labour Force, Australia (6203.0) — issued monthly

Labour Force Experience, Australia (6206.0) — issued two-yearly

Labour Mobility, Australia (6209.0) — issued two-yearly

Persons who have Left the Labour Force, Australia (6267.0) — issued irregularly

Job Search Experience of Unemployed Persons, Australia, July 1992 (6222.0) — issued annually

Transition from Education to Work, Australia (6227.0) — issued annually

Successful and Unsuccessful Job Search Experience, Australia (6245.0) — issued two-yearly

13. Current publications produced by the ABS are listed in the *Catalogue of Publications and Products, Australia* (1101.0). The ABS also issues, on Tuesdays and Fridays, a *Publications Advice* (1105.0) which lists publications to be released in the next few days. The *Catalogue* and *Publications Advice* are available from any ABS office.

Symbols and other usages

- * subject to sampling variability too high for most practical uses. See the Technical Note, page 14.
- ** not applicable.

14. Because estimates have been rounded, discrepancies may occur between sums of the component items and totals.

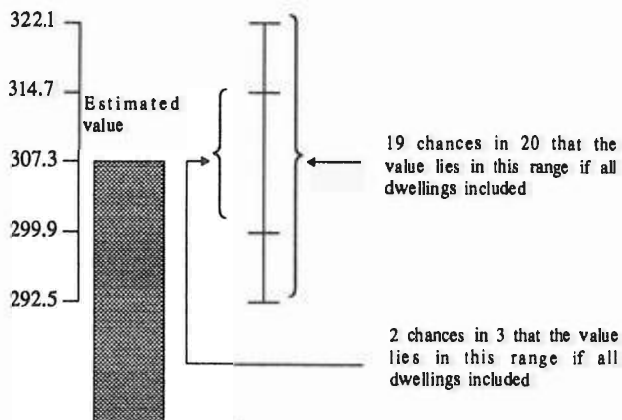
TECHNICAL NOTE

Since the estimates in this publication are based on information obtained from occupants of a sample of dwellings, they are subject to sampling variability, that is, they may differ from those that would have been produced if all dwellings had been included in the survey. One measure of the likely difference is given by the *standard error*, which indicates the extent to which an estimate might have varied by chance because only a sample of dwellings was included. There are about two chances in three that a sample estimate will differ by less than one standard error from the number that would have been obtained if all dwellings had been included, and about nineteen chances in twenty that the difference will be less than two standard errors. Another measure of the likely difference is the *relative standard error*, which is obtained by expressing the standard error as a percentage of the estimate.

2. Space does not allow for the separate indication of the standard errors of all estimates in this publication. A table of standard errors for general application is given on the following page. Since they are averages based on calculations for a limited number of past surveys over a wide range of labour force characteristics these numbers will not give a precise measure of the standard error of a particular estimate but they will provide an indication of its magnitude.

3. An example of the calculation and the use of standard errors in relation to estimates of persons is as follows. Table 2 shows the estimated number of females aged 15 and over who were in the labour force in May 1993 but were not in the labour force twelve months ago was 307,300. Since this estimate is between 300,000 and 400,000 the standard error for Australia will be between 7,300 and 8,200 in the standard error table and can be approximated as 7,400 (rounded to the nearest 100). Therefore, there are about two chances in three that the value that would have been produced if all dwellings had been included in the survey will fall in the range 299,900 to 314,700 and about nineteen chances in twenty that the value will fall within the range 292,500 to 322,100. This example is illustrated in the following diagram:

(*000)



4. As can be seen from the standard error table, *the smaller the estimate the higher is the relative standard error*. Very small estimates are thus subject to such high standard errors (relative to the size of the estimate) as to detract seriously from their value for most reasonable uses. In the tables in this publication, only estimates with relative standard errors of 25 per cent or less and percentages based on such estimates are considered sufficiently reliable for most purposes. However, estimates and percentages with larger relative standard errors have been included and are preceded by an asterisk (e.g. *3.9) to indicate they are subject to high standard errors and should be used with caution.

5. Proportions and percentages formed from the ratio of two estimates are also subject to sampling errors. The size of the error depends on the accuracy of both the numerator and the denominator. A formula to approximate the relative standard error (RSE) of a proportion is:

$$RSE (x/y) = \sqrt{[RSE (x)]^2 - [RSE (y)]^2}$$

6. Considering the example from paragraph 3 above, of the 307,300 females aged 15 and over who were in the labour force in May 1993 but were not in the labour force twelve months ago, only 61,900 or 20.1 per cent were born outside Australia. The standard error of 61,900 is approximately 3,700 so the relative standard error is 6.0 per cent. The relative standard error for 307,300 is 2.4 per cent. Applying the above formula, the relative standard error of the proportion is $\sqrt{[(6.0)^2 - (2.4)^2]}$ or 5.5 per cent, giving a standard error for the proportion (20.1 per cent) of 1.1 percentage points. Therefore, there are about two chances in three that the proportion of females who were in the labour force in May 1993 but were not in the labour force twelve months ago was between 19.0 per cent and 21.2 per cent and nineteen chances in twenty the proportion was within the range 17.9 per cent to 22.3 per cent.

7. Published estimates may also be used to calculate the difference between two survey estimates (of numbers or percentages). Such an estimate is subject to sampling error. The sampling error of the difference between two estimates depends on their standard errors and the relationship (correlation) between them. An approximate standard error (SE) of the difference between two estimates (x-y) may be calculated by the following formula:

$$SE (x-y) = \sqrt{[SE (x)]^2 + [SE (y)]^2}$$

While this formula will only be exact for differences between separate and uncorrelated characteristics or subpopulations it is expected to provide a good approximation for all differences likely to be of interest in this publication.

8. The imprecision due to sampling variability, which is measured by the standard error, should not be confused with inaccuracies that may occur because of imperfections in reporting by interviewers and respondents and errors made in coding and processing data. Inaccuracies of this kind are referred to as the *non-sampling error*, and they

may occur in any enumeration, whether it be a full count or a sample. Every effort is made to reduce the non-sampling error to a minimum by careful design of questionnaires, intensive training and supervision of interviewers and efficient operating procedures.

STANDARD ERRORS OF ESTIMATES

Size of estimate (Persons)	NSW	Vic.	Qld	SA	WA	Tas.	NT	ACT	Australia	
	— number —									Relative standard error (per cent)
100				120		90	100	80	130	125.4
200		230	210	180	200	130	140	120	190	94.9
300	320	290	260	220	250	160	170	140	240	80.2
400	370	340	300	260	280	190	190	160	280	71.0
500	420	380	340	290	310	210	210	180	320	64.5
600	460	420	370	310	340	230	230	190	360	59.6
700	500	450	400	340	370	240	250	210	390	55.7
800	530	490	430	360	400	260	260	220	420	52.5
900	560	520	460	380	420	280	280	230	450	49.8
1,000	590	540	480	400	440	290	290	240	480	47.5
1,100	620	570	510	420	460	300	300	250	500	45.5
1,200	650	600	530	440	480	310	310	260	520	43.7
1,300	680	620	550	460	500	330	330	270	550	42.2
1,400	700	640	570	470	510	340	340	280	570	40.8
1,500	720	670	590	490	530	350	350	290	590	39.5
1,600	750	690	610	500	550	360	360	300	610	38.3
1,700	770	710	630	520	560	370	370	310	630	37.3
1,800	790	730	640	530	580	380	380	320	650	36.3
1,900	810	750	660	540	590	390	390	320	670	35.4
2,000	830	770	680	560	610	400	400	330	690	34.6
2,100	850	790	690	570	620	400	400	340	710	33.8
2,200	870	810	710	580	630	410	410	340	730	33.1
2,300	890	820	720	590	650	420	420	350	740	32.4
2,400	910	840	740	610	660	430	430	360	760	31.7
2,500	930	860	750	620	670	440	440	360	780	31.1
3,000	1,000	940	820	670	730	470	480	390	860	28.5
3,500	1,100	1,000	880	720	780	500	510	420	930	26.5
4,000	1,150	1,100	940	770	830	530	540	440	990	24.9
4,500	1,250	1,150	990	810	880	550	570	460	1,050	23.5
5,000	1,300	1,200	1,050	850	920	580	600	490	1,100	22.3
6,000	1,400	1,300	1,150	920	1,000	620	650	520	1,200	20.4
8,000	1,600	1,500	1,300	1,050	1,150	690	750	590	1,400	17.7
10,000	1,750	1,650	1,400	1,150	1,250	750	830	640	1,600	15.8
20,000	2,400	2,250	1,950	1,550	1,650	960	1,150	840	2,200	11.0
30,000	2,850	2,700	2,300	1,800	1,950	1,100	1,400	990	2,650	8.9
40,000	3,250	3,000	2,600	2,050	2,200	1,200	1,600	1,100	3,050	7.6
50,000	3,550	3,300	2,850	2,250	2,450	1,250	1,750	1,200	3,400	6.8
100,000	4,750	4,400	3,750	2,900	3,200	1,550	2,450	1,550	4,600	4.6
200,000	6,200	5,800	4,950	3,750	4,150	1,800	3,400	1,950	6,200	3.1
300,000	7,300	6,700	5,800	4,350	4,850	1,950		2,250	7,300	2.4
400,000	8,100	7,500	6,400	4,800	5,400	2,100			8,200	2.1
500,000	8,800	8,100	7,000	5,200	5,800	2,200			9,000	1.8
1,000,000	11,300	10,400	8,900	6,600	7,400				11,800	1.2
2,000,000	14,300	13,100	11,300	8,200	9,400				15,200	0.8
5,000,000	19,300	17,600	15,300						21,000	0.4
10,000,000	23,900								26,500	0.3
20,000,000									32,900	0.2

GLOSSARY

Ceased previous job: persons who left or lost their previous job.

Educational attainment: measures the highest qualification completed by the respondent, classified according to the Australian Bureau of Statistics Classification of Qualifications (ABSCQ). The seven categories for level of attainment are —

Higher degree: Includes doctorates and masters degrees. The minimum entry requirements are usually a masters degree or first class honours for a doctorate and first class honours for a masters degree. The duration of study is a minimum of two to four years for a doctorate and two years full-time or equivalent for a masters degree.

Postgraduate diploma: Includes Graduate Certificates. The entry requirement is usually the successful completion of a bachelor degree or an undergraduate diploma. The duration of study ranges from six months (for a Graduate Certificate) to one year full-time study or equivalent.

Bachelor degree: The entry requirement is the satisfactory completion of Year 12 or its equivalent. The duration of study ranges from three to six years full-time study or its equivalent.

Undergraduate diploma: The entry requirement is usually the successful completion of Year 12 or its equivalent. The duration of study is three years full-time study or its equivalent. Certain other qualifications are classified to this level on the basis that their entry requirements, duration of study and theoretical orientation are regarded as being equivalent to those of undergraduate diplomas, for example, Certificate in Psychiatric Nursing.

Associate diploma: The entry requirement is usually the completion of Year 12 or the completion of Year 10 and a pre-requisite certificate course. The duration of study ranges from one to two years full-time study or its equivalent. Advanced Certificates, Technician Certificates and Certificates of Technology are included in this level as they have broadly the same theoretical orientation as associate diplomas.

Skilled Vocational Qualifications: The entry requirement is usually the completion of Year 10 or its equivalent. In addition, some courses may require a student to be concurrently employed in that specific field. The duration of study is two to four years, and typically involve some on-the-job training.

Basic Vocational Qualifications: Often require Year 10 completion, however many courses have no formal entry requirements. The duration of study ranges from one semester to one year of full-time study or equivalent.

Employees: persons who worked —

(a) for an employer for wages or salary; or

(b) in their own business, either with or without employees, if that business was a limited liability company; or

(c) for payment in kind.

Family: is defined to consist of two or more related persons usually resident in the same household at the time of the survey. A family comprises a married couple or a family head together with any persons having any of the following relationship to them:

(a) sons or daughters of any age, if not married and with no children of their own at present; or

(b) other relatives if not accompanied by a spouse, sons or daughters, or parents of their own; or

(c) any children under 15 years of age who do not have a parent present.

Full-time workers: employees who usually worked a total of 35 hours or more a week in all jobs and others who usually work less than 35 hours a week but worked 35 hours or more during the reference week.

Highest level of secondary school available: the highest level of secondary schooling (or equivalent) offered by the education system at the time the respondent left school.

Job leavers: persons who voluntarily ceased their last job.

Job losers: persons who involuntarily ceased their last job.

Labour force: persons in the labour force are those who were reported as having worked or looked for work (as defined).

Looked for work: persons who were reported as having been out of work and looking for a job.

Main English-speaking countries: comprises the United Kingdom, Ireland, Canada, South Africa, U.S.A., and New Zealand.

Method of job attainment: determined by the respondents' answer to the question: 'How did you find out that a job was available?' and is described according to whether an employer approached the jobseeker or a jobseeker approached the employer. In the latter case, the job is described according to whether or not the jobseeker knew that a job was available before approaching the employer.

Not in the labour force: persons who were reported as having neither worked or looked for work (as defined).

Part-time workers: employees who usually worked a total of less than 35 hours a week in all jobs and who did so during the reference week.

Persons who had re-entered the labour force: persons who were working or looking for work in the reference week (i.e. week before the interview), had a period out of the labour force of at least twelve months duration that finished within the last twelve months and had worked continuously for a period of twelve months or more at some earlier time.

Previous job: the last job that a person reported having worked in continuously for a period of twelve months or more.

Re-entrants: see 'Persons who had re-entered the labour force'.

Still at school: current school attendance is recorded only for persons aged fifteen to twenty years.

Time since previous job: the total time since previous job.

Time spent not in labour force since previous job: the time spent neither working or looking for work since previous job. For some persons, this is the same *time since previous job*. However, for those who have worked for periods of less than twelve continuous months and/or have looked for work since leaving their previous job, this time will be less than *time since previous job*.

Usual gross weekly pay: the amount of usual total weekly pay (i.e. before taxation and other deductions have been made).

SPECIAL DATA SERVICES

DATA ITEMS AND HOW TO ORDER SPECIAL TABLES FROM THIS SURVEY

The ABS offers a range of unpublished data from this survey upon request. When ordering special tables from this survey, please ensure you identify the **population(s)** and the **data item(s)** which you require.

This section specifies the data items, categories and populations which relate to the survey and includes an order form for special tables. More detailed breakdowns of some data items are available on request.

The population(s) for a particular data item refers to the persons in the survey to whom the data item relates.

Refer to the glossaries in this publication and in *The Labour Force, Australia* (6203.0) for definitions of data items.

POPULATIONS

POPULATION 1: Persons aged 15 and over

POPULATION 2: Persons who were in the labour force at May 1993 but were not in the labour force twelve months ago

POPULATION 3: Persons who were in the labour force at May 1993 but were not in the labour force twelve months ago and had worked continuously for at least twelve months at some earlier time

POPULATION 4: Persons who had re-entered the labour force (i.e. Persons who were in the labour force at May 1993, had a period not in the labour force for at least twelve months duration that finished within the last twelve months and had worked continuously for at least twelve months at some earlier time)

POPULATION 5: Persons who had re-entered the labour force and were working

POPULATION 6: Persons who had re-entered the labour force and were looking for work

POPULATION 7: Persons who had re-entered the labour force and were working as employees

DATA ITEM	POPULATIONS	DATA ITEM	POPULATIONS
1 STATE OF USUAL RESIDENCE	ALL	6A FAMILY STATUS (1)	ALL
New South Wales		Member of a family	
Victoria		Husband or wife	
Queensland		With dependants present	
South Australia		Without dependants present	
Western Australia		Sole parent	
Tasmania		Other family head	
Northern Territory		Full-time student aged 15-24(a)	
Australian Capital Territory		Other child(b) of married couple or family head	
2 AREA OF USUAL RESIDENCE	ALL	Other relative of married couple or family head	
Metropolitan		Not a member of a family	
Non-metropolitan		Living alone	
3 REGION OF USUAL RESIDENCE	ALL	Not living alone	
Standard labour force dissemination region		Family status not determined	
4 SEX	ALL	(a) Includes persons aged 20-24 attending school.	
Males		(b) Aged 15 and over.	
Females			
5 MARITAL STATUS	ALL		
Married			
Not-married			

DATA ITEM	POPULATIONS
6B FAMILY STATUS (2)	ALL
Member of a family	
Husband or wife	
With children aged 0-14 present	
Without children aged 0-14 present	
Sole parent	
With children aged 0-14 present	
Without children aged 0-14 present	
Other family head	
Full-time student aged 15-24(a)	
Other child(b) of married couple or family head	
Other relative of married couple or family head	
Not a member of a family	
Living alone	
Not living alone	
Family status not determined	
(a) Includes persons aged 20-24 attending school.	
(b) Aged 15 and over.	
7A BIRTHPLACE	ALL
Born in Australia	
Born outside Australia	
Born in main English-speaking countries	
Born in other countries	
7B BIRTHPLACE AND PERIOD OF ARRIVAL	ALL
Born in Australia	
Born outside Australia	
Arrived before 1971	
Arrived 1971-1980	
Arrived 1981-1990	
Arrived 1991 to survey date	
8 AGE	ALL
15-24	
25-34	
35-44	
45-54	
55 and over	
9 SUMMARY OF LABOUR FORCE ACTIVITY AND WHETHER HAD RE-ENTERED THE LABOUR FORCE	1
Persons aged 15 and over	
Not working or not looking for work	
Working or looking for work	
In the labour force twelve months ago	
Out of the labour force twelve months ago	
Had never worked continuously for at least twelve months	
Had never worked before	
Had worked at some earlier time	
Had worked continuously for at least twelve months	
Out of the labour force for less than twelve months	
Working at May 1993	
Looking for work at May 1993	
10 WHETHER WORKED CONTINUOUSLY FOR AT LEAST TWELVE MONTHS AT SOME EARLIER TIME	2
Had never worked continuously for at least twelve months	
Had never worked before	
Had worked at some earlier time	
Had worked continuously for at least twelve months at some earlier time	

DATA ITEM	POPULATIONS
11 WHETHER WORKING OR LOOKING FOR WORK AT MAY 1993	2-4
Working	
Looking for work	
12 EDUCATIONAL ATTAINMENT AT MAY 1993	2-7
With post-school qualifications	
Higher degree	
Post-graduate diploma	
Bachelor degree	
Undergraduate diploma	
Associate diploma	
Skilled vocational qualifications	
Basic vocational qualifications	
Without post-school qualifications	
Completed highest level of secondary school available	
Attending a tertiary institution in May 1993	
Not attending a tertiary institution in May 1993	
Did not attend highest level of school	
Attending a tertiary institution in May 1993	
Not attending a tertiary institution in May 1993	
Never attended school (aged 15 - 24)	
Still at school	
Not asked(a)	
(a) Persons aged 65 years and over were not asked their educational qualifications.	
13 ALL STEPS TAKEN TO FIND WORK DURING THE LAST TWELVE MONTHS	3-7
Registered with the CES	
Contacted prospective employers	
Checked factory or CES noticeboards	
Checked or registered with any other employment agency	
Looked in newspapers	
Answered a newspaper advertisement for a job	
Advertised or tendered for work	
Contacted friends or relatives	
Other steps	
Had not looked for work	
14 ACTIVE STEPS TAKEN TO FIND WORK DURING THE LAST TWELVE MONTHS	3-7
Had looked for work	
Registered with CES	
Took no other active steps	
Contacted prospective employers	
Took other active steps	
Not registered with CES	
Took only inactive steps	
Contacted prospective employers	
Took other active steps	
Had not looked for work	

DATA ITEM	POPULATIONS	DATA ITEM	POPULATIONS
15 ALL DIFFICULTIES IN FINDING WORK DURING THE LAST TWELVE MONTHS	3-7	20 OCCUPATION IN PREVIOUS JOB	3-7
Own ill health or disability		Previous job less than 20 years ago	
Considered too young or too old by employers		Managers and administrators	
Unsuitable hours		Professionals	
Too far to travel/transport problems		Para-professionals	
Lacked necessary skills/education		Tradespersons	
Language difficulties		Clerks	
Insufficient work experience		Salespersons and personal service workers	
No vacancies in line of work		Plant and machine operators, and drivers	
No vacancies at all		Labourers and related workers	
Ethnic background		Previous job 20 or more years ago	
Difficulties finding childcare		21 STATUS OF WORKER IN PREVIOUS JOB	3-7
Other family responsibilities		Previous job less than 20 years ago	
Other difficulties		Employers	
No difficulties at all		Self-employed	
Had not looked for work		Wage and salary earners	
16 MAIN DIFFICULTY IN FINDING WORK DURING THE LAST TWELVE MONTHS	3-7	Unpaid family helpers	
Had looked for work		Previous job 20 or more years ago	
Own ill health or disability		22 REASON FOR CEASING PREVIOUS JOB	3-7
Considered too young or too old by employers		Job loser	
Unsuitable hours		Retrenched	
Too far to travel/transport problems		Job was temporary or seasonal and did not leave to return to studies	
Lacked necessary skills/education		Own ill health or injury	
Language difficulties		Business closed down for economic reasons	
Insufficient work experience		Job leaver	
No vacancies in line of work		Unsatisfactory work arrangements	
No vacancies at all		Job was temporary or seasonal and left to return to studies	
Ethnic background		Business closed down for other reasons	
Difficulties finding childcare		Retired/didn't want to work any longer	
Other difficulties		Returned to studies	
No difficulties at all		To get married	
Had not looked for work		Pregnancy/to have children	
17 MAIN ACTIVITY BEFORE WORKING/LOOKING FOR WORK	2	To look after family, house or someone else	
Had never worked before		To have holiday/to move house/ spouse transferred	
Retired/voluntarily inactive		Other	
Attending an educational institution		23 MAIN ACTIVITY WHILE OUT OF LABOUR FORCE SINCE PREVIOUS JOB	3-7
Home duties/childcare		Retired/voluntarily inactive	
Own illness/injury; own disability/handicap		Attending an educational institution	
Travelled/moved house/holiday		Home duties/childcare	
Looked for work		Own illness/injury; own disability/handicap	
Other		Travelled/moved house/holiday	
Had worked before		Looked for work	
18 TIME SINCE PREVIOUS JOB	3-7	Other	
1-2 years			
3-9 years			
3-4 years			
5-9 years			
10 years or more			
10-19 years			
20 years or more			
19 FULL-TIME OR PART-TIME WORKER IN PREVIOUS JOB	3-7		
Previous job less than 20 years ago			
Full-time			
Part-time			
Varied/did not know			
Previous job 20 or more years ago			

DATA ITEM	POPULATIONS	DATA ITEM	POPULATIONS
24 EDUCATIONAL ATTAINMENT WHEN CEASED PREVIOUS JOB	3-7	29 OCCUPATION AT MAY 1993	5,7
With post-school qualifications		Managers and administrators	
Higher degree		Professionals	
Post-graduate diploma		Para-professionals	
Bachelor degree		Tradespersons	
Undergraduate diploma		Clerks	
Associate diploma		Salespersons and personal service workers	
Skilled vocational qualifications		Plant and machine operators and drivers	
Basic vocational qualifications		Labourers and related workers	
Without post-school qualifications			
Attended highest level of secondary school available			
Attending a tertiary institution in May 1993			
Not attending a tertiary institution in May 1993			
Did not attend highest level of school(a)			
Attending a tertiary institution in May 1993			
Not attending a tertiary institution in May 1993			
Never attended school (aged 15 - 24)			
Still at school			
Not asked(a)			
		Note: Data available at Unit Group (4-digit) level.	
(a) Persons aged 65 years and over were not asked their educational qualifications.		30 INDUSTRY AT MAY 1993	5,7
25 HIGHEST EDUCATIONAL QUALIFICATION GAINED SINCE PREVIOUS JOB	3-7	Agriculture, forestry, fishing and hunting	
Previous job less than 20 years ago		Mining	
Had gained an educational qualification		Manufacturing	
Higher degree		Electricity, gas and water	
Post-graduate diploma		Construction	
Bachelor degree		Wholesale and retail trade	
Undergraduate diploma		Transport and storage	
Associate diploma		Communication	
Skilled vocational qualifications		Finance, property and business services	
Basic vocational qualifications		Public administration and defence	
Had not gained an educational qualification		Community services	
Never attended school		Recreation, personal and other services	
Still at school			
Previous job 20 or more years ago		Note: Data available at Unit Group (3-digit) level.	
26 MAIN REASON FOR WANTING TO WORK AGAIN	3-7	31 STATUS OF WORKER AT MAY 1993	5
Completed studies		Employers	
Financial reasons		Self-employed	
Returned after own illness or injury		Wage and salary earners	
Children gone to school/no longer needed to look after children		Unpaid family helpers	
Boredom/needed another interest			
To help in family business/bought business		32 WHETHER LOOKING FOR FULL-TIME OR PART-TIME WORK AT MAY 1993	6
Unpaid leave finished		Looking for full-time work	
Other		Looking for part-time work	
27 TIME SPENT NOT IN THE LABOUR FORCE SINCE PREVIOUS JOB	3	33 METHOD OF JOB ATTAINMENT	7
1-2 years		Jobseeker approached employer	
3-9 years		Had no prior knowledge that job was available	
3-4 years		First step taken —	
5-9 years		Contacted likely employers	
10 years or more		Tendered/advertised for work	
10-19 years		Contacted friends or relatives	
20 years or more		Checked CES noticeboards	
		Other	
		Had prior knowledge that job was available	
		Through vocational guidance/work experience programs	
		Through welfare agency or organisation	
		CES	
		Private employment agency	
		Newspaper advertisements	
		Friends/relatives/company contacts	
		Sign/notice on employers' premises	
		Other	
		Employer approached jobseeker	
		Not asked	
28 FULL-TIME AND PART-TIME WORKERS AT MAY 1993	5,7	34 USUAL GROSS WEEKLY PAY AT MAY 1993	7
Full-time workers		Under 120	
Part-time workers		120 and under	160
		160	200
		200	240
		240	280
		280	320
		320	360
		360	400
		400 and over	
		Did not know	
		Payment in kind	

SPECIAL DATA REQUEST ORDER FORM

PERSONS WHO HAD RE-ENTERED THE LABOUR FORCE, MAY 1993

Please specify your special data request(s) on the order form provided on the following page.

The following points should be noted when requesting special tables:

1. Table requests will be available on computer printout, floppy disk or microfiche.
2. The current cost of special tables is as follows —

No. of variables (excluding populations)	Cost per table (\$)
2	120
3	150
4	225
5	330
6 or more	negotiable

Note: Prices quoted are subject to revision.

3. Return the completed order form together with the address advice to —

Assistant Director
Labour Force Supplementary Surveys
Australian Bureau of Statistics
PO Box 10
Belconnen ACT 2616

OR

Facsimile No. (06) 252 7784

4. The invoiced cost is payable in full within 30 days of supply.
5. Any inquiries about this order should be directed to Mr Michael Jones on (06) 252 6503.



ADDRESS ADVICE — DETACH AND FORWARD TOGETHER WITH YOUR COMPLETED ORDER FORM.

Please send my order and invoice to —

NAME _____

ORGANISATION _____

ADDRESS _____

_____ POSTCODE _____

TELEPHONE _____

Signature _____

Date / /

Persons Who Had Re-entered the Labour Force, May 1993

SUPPLEMENTARY AND SPECIAL SURVEYS

The supplementary and special surveys collect data on particular aspects of the labour force. It may be possible to order Unit Record Tapes on the following supplementary and special surveys by contacting the ABS (see below for contact numbers).

<i>Title of Publication</i>	<i>Catalogue No.</i>
Alternative Working Arrangements, Australia, March to May 1982, September to November 1986	6341.0
Annual and Long Service Leave Taken, Australia, May 1988 to April 1989	6317.0
Career Experience, Australia. Three-yearly. First issue February 1993	6254.0
Career Paths of Persons with Trade Qualifications, Australia, 1989	6243.0
Career Paths of Qualified Nurses, Australia, 1989	6277.0
Child Care, Australia, May 1969, 1973, 1977; June 1980; November 1984; June 1987; November 1990	4402.0
Employment Benefits, Australia. Two-yearly. Latest issue August 1992	6334.0
How Workers Get Their Training, Australia, 1989	6278.0
Income Distribution Survey, Australia, Persons with Earned Income, 1986, 1990	6546.0
Job Search Experience of Unemployed Persons, Australia. Annually. Latest issue July 1993	6222.0
Labour Force Experience, Australia. Annually. Latest issue March 1993	6206.0
Labour Force Status and Educational Attainment, Australia. Annually. Latest issue February 1993	6235.0
Labour Force Status and Other Characteristics of Families, Australia. Annually. Latest issue June 1992	6224.0
Labour Force Status and Other Characteristics of Migrants, Australia, September 1990	6250.0
Labour Mobility, Australia. Two yearly. Latest issue February 1992	6209.0
Multiple Jobholding, Australia. Four-yearly. Latest issue July 1991	6216.0
Participation in Education, Australia. (Formerly Labour Force Status and Educational Attendance). Annually. Latest issue September 1992	6272.0
Persons Employed at Home, Australia, April 1989, March 1992	6275.0
Persons Not in the Labour Force, Australia. Annually. Latest issue September 1992	6220.0
Persons Who Had Re-entered the Labour Force, Australia, May 1985, May 1987, May 1990, May 1993	6264.0
Persons Who Have Left the Labour Force, Australia, November 1985, April 1988, April 1991	6267.0
Retirement and Retirement Intentions, Australia, November 1986, November 1989, October 1992	6238.0
Successful and Unsuccessful Job Search Experience, Australia. Two-yearly. Latest issue July 1992	6245.0
Superannuation, Australia, February 1974, September to November 1982, November 1988, November 1991	6319.0
Trade Union Members, Australia. Two-yearly. Latest issue August 1992	6325.0
Transition From Education to Work, Australia. Annually. Latest issue May 1992	6227.0
Underemployed Workers, Australia, May 1988, May 1991	6265.0
Weekly Earnings of Employees (Distribution), Australia. Annually. Latest issue August 1992	6310.0

LABOUR FORCE INQUIRIES



SYDNEY (02) 268 4212	ADELAIDE (08) 237 7438
MELBOURNE (03) 615 7677	HOBART (002) 20 5840
BRISBANE (07) 222 6337	DARWIN (089) 43 2150
PERTH (09) 323 5380	CANBERRA (06) 252 6525



For more information ...

The ABS publishes a wide range of statistics and other information on Australia's economic and social conditions. Details of what is available in various publications and other products can be found in the *ABS Catalogue of Publications and Products* available at all ABS Offices (see below for contact details).

Information Consultancy Service

Information tailored to special needs of clients can be obtained from the Information Consultancy Service available at ABS Offices (see Information Inquiries below for contact details).

National Dial-a-Statistic Line

0055 86 400

(Steadycom P/L: premium rate 25c/21.4 secs.)

This number gives you 24 hour access, 365 days a year for a range of statistics.

Electronic Data Services

A wide range of ABS data are available on electronic media. Selections of most frequently requested statistics are available, updated daily, on DISCOVERY (Key *656#). The ABS PC TELESTATS service delivers major economic indicator main features ready to download into personal computers on the day of release. The PC AUSSTATS service enables on-line access to a data base of thousands of up-to-date time series. Selected datasets are also available on diskette or CD-ROM. For more details on electronic data services available, contact Information Services in any of the ABS Offices (see Information Inquiries below for contact details).

Bookshops and Subscriptions

There are over 500 titles of various publications available from ABS bookshops in all ABS Offices (see below Bookshop Sales for contact details). The ABS also provides a subscription service through which nominated publications are provided by mail on a regular basis at no additional cost (telephone Publications Subscription Service toll free on 008 02 0608 Australia wide).

Sales and Inquiries

Regional Offices	Information Inquiries	Bookshop Sales
SYDNEY (02)	268 4611	268 4620
MELBOURNE (03)	615 7000	615 7829
BRISBANE (07)	222 6351	222 6350
PERTH (09)	323 5140	323 5307
ADELAIDE (08)	237 7100	237 7582
HOBART (002)	205 800	205 800
CANBERRA (06)	207 0315	207 0315
DARWIN (089)	432 111	432 111
National Office		
ACT (06)	252 6007	008 020 608



Information Services, ABS, PO Box 10, Belconnen ACT 2616



2626400005933
ISBN 0 642 15477 5